

Università di Roma Sapienza

Prima Facoltà di Architettura Ludovico Quaroni

Corso di Laurea Specialistica in Architettura UE

LABORATORIO DI PROGETTAZIONE IV

Prof. Antonino Saggio

# Architettura secondo Natura



Studenti: Fabio Coletta, Gaetano De Francesco

# Architettura **bioclimatica**

significa progettazione in funzione di due fattori:

**BIO** = vita e quindi attenzione alla vita e al benessere umano;

**CLIMA** = insieme degli aspetti climatici del luogo; delle risorse rinnovabili (sole, vento acqua corrente); delle risorse fisico-ambientali del territorio (orografia, vegetazione, terreno).

L'obiettivo è creare all'interno dello spazio costruito le migliori condizioni di comfort termiche e igrometriche per l'uomo.

1



2



BLUE POOL FERRY  
TO  
GARINISH ISLAND

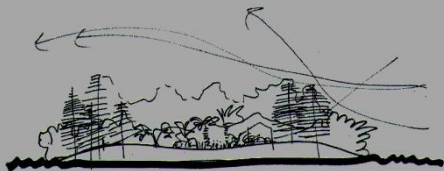


Un paesaggio plasmato dall' uomo Harold Peto - Giardino Esotico

3



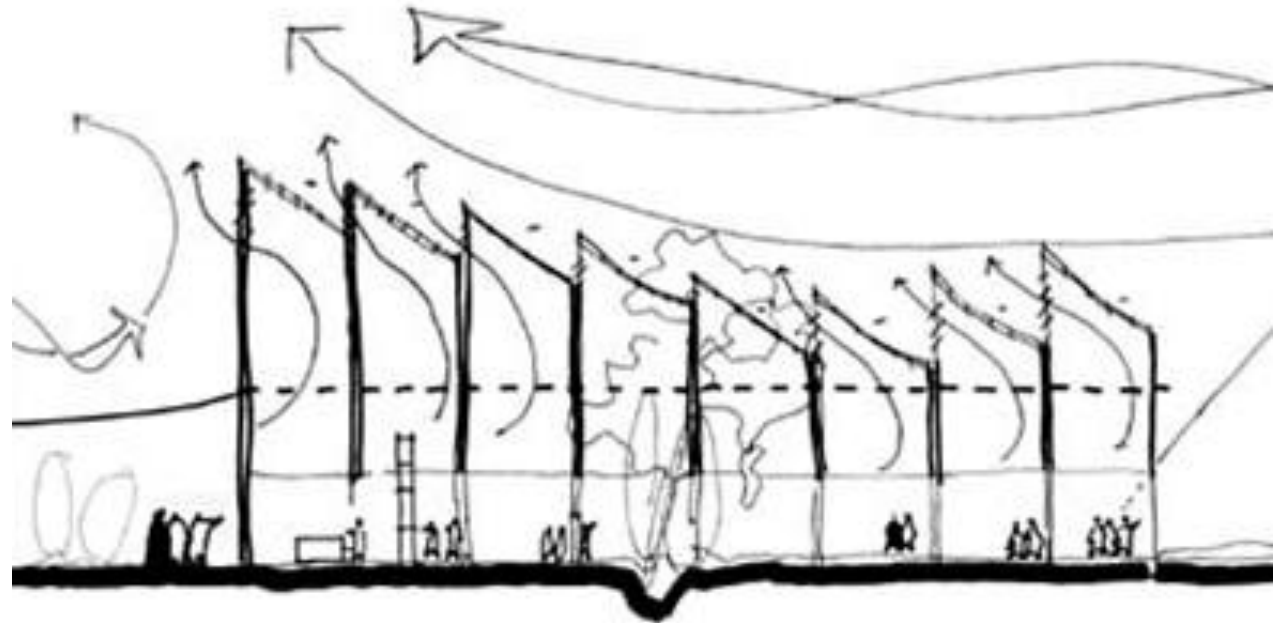
4



Ricerca e Sperimentazione in **MCA**

mario cucinella architects

Conferenza dell' arch. Mario Cucinella 16 marzo 2010 Università di Torvergata



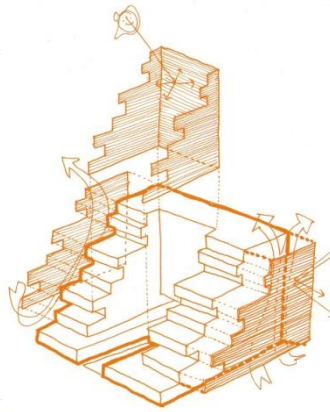
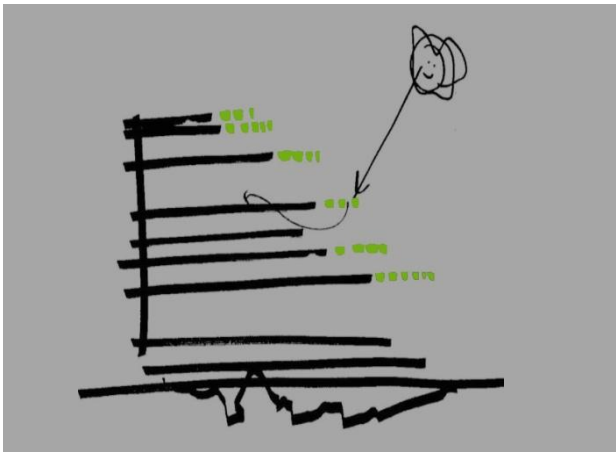


mario cucinella architects

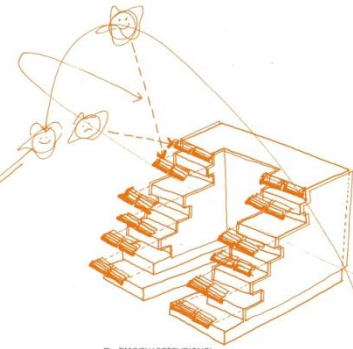
**MC A**

**SIEEB**

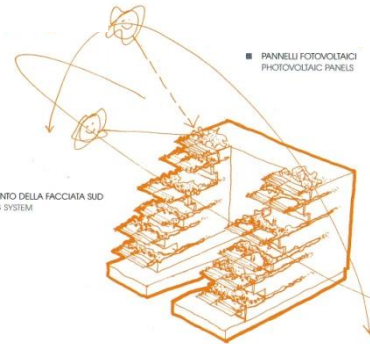
Sino - Italian Ecological And Energy Efficient Building



■ FACCIATE A DOPPIA PELLE  
DOUBLE SKIN FACADES



■ PANNELLI FOTOVOLTAICI  
PHOTOVOLTAIC PANELS

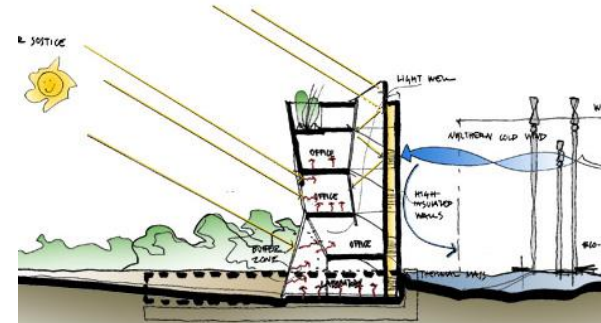
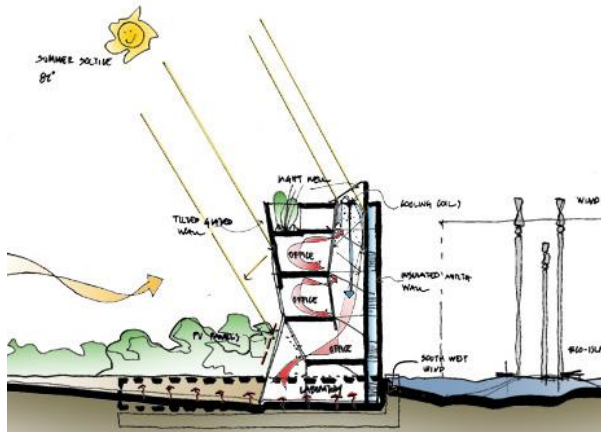


■ SISTEMA DI OMBREGGIAMENTO DELLA FACCIATA SUD  
SOUTH FACADE SCREENING SYSTEM

■ RETI E CURTI INTERNE

# SIEEB





mario cucinella architects

# MC A Centre for Sustainable Energy Technologies



CSET



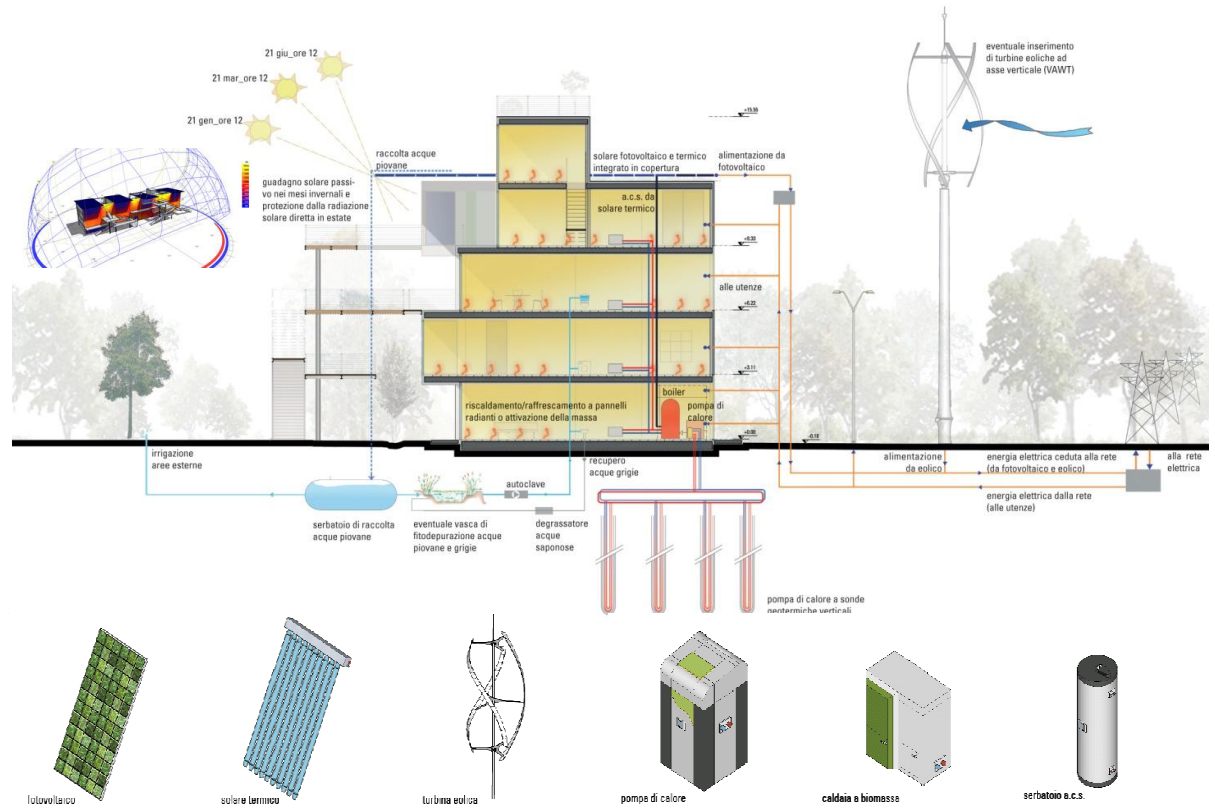




mario cucinella architects

# MC A

## Casa da 100 K€



100 k€

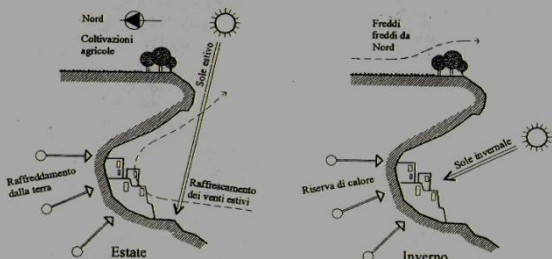
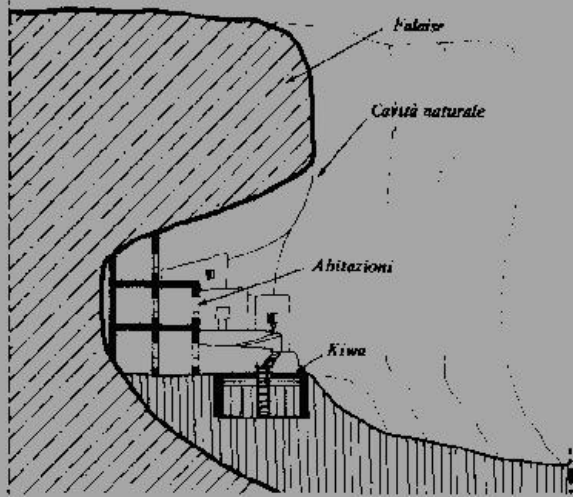




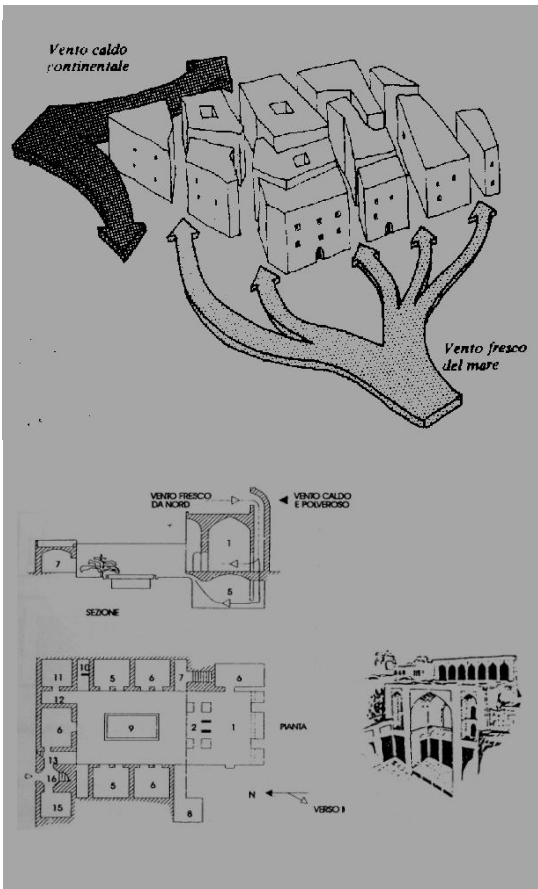
# La Bioclimatica nella Storia

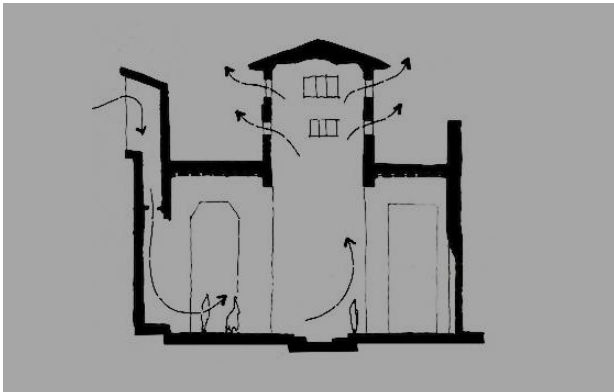


# Insediamiento nella roccia risalente a 6000 anni fa circa

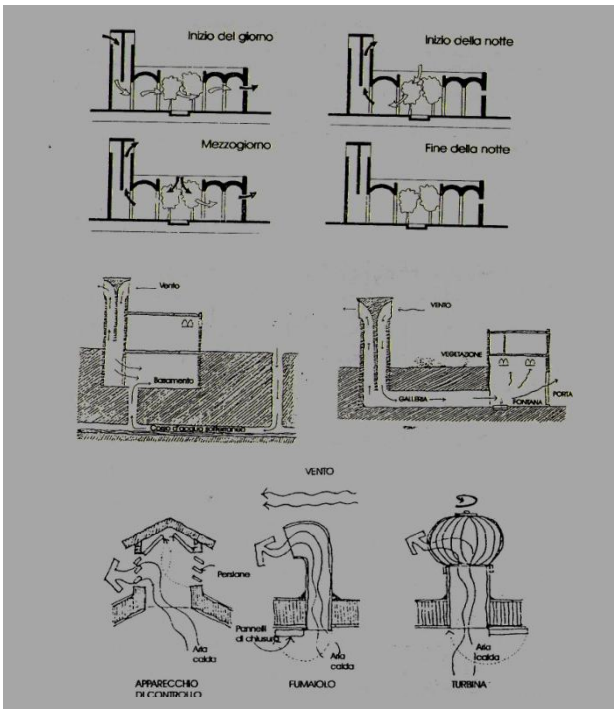


# Agglomerato urbano in clima desertico

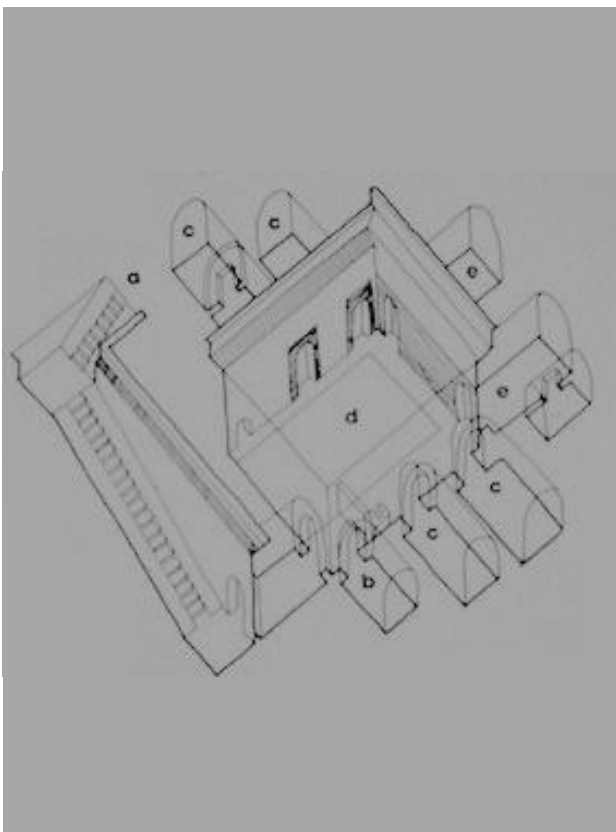




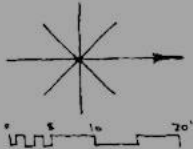
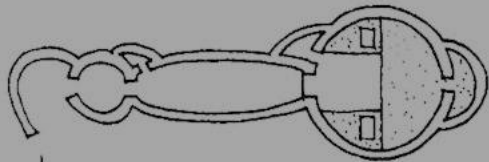
## Torri del vento in climi torridi



## Case preistoriche in fossa scavate nel loess in clima caldo secco



# Igloo



sezione trasversale





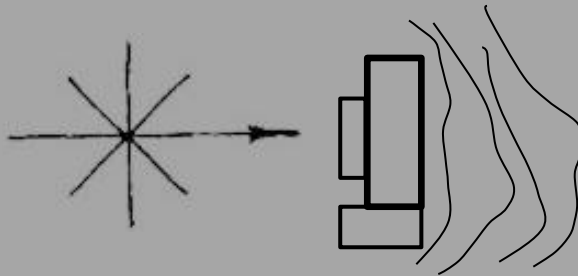


## Case scavate nelle montagne



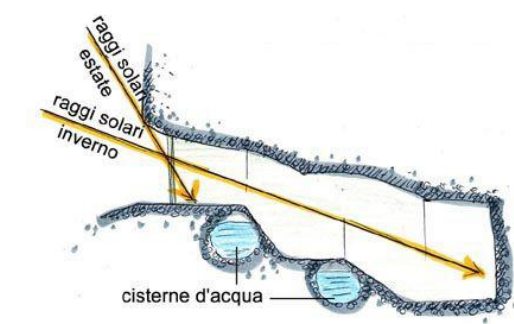


Casa alpina

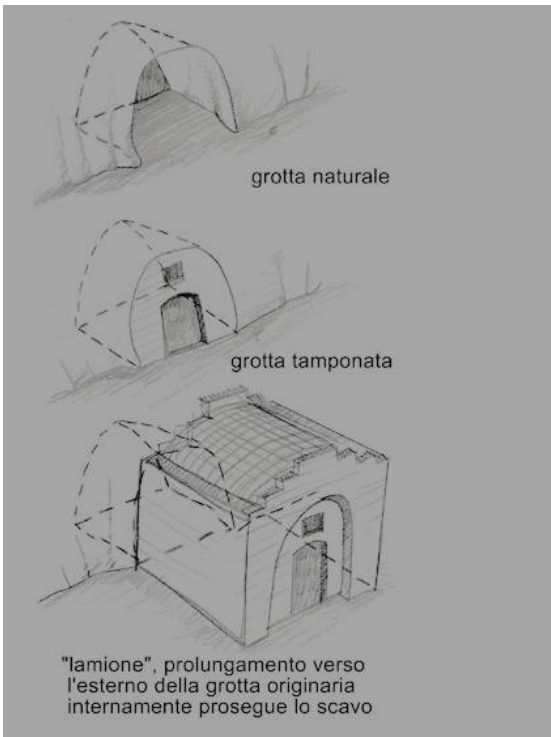


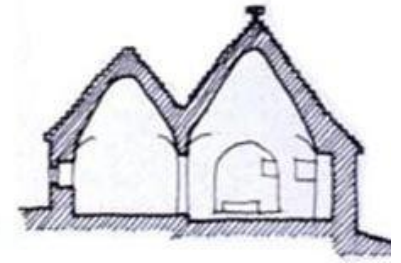
## Casa colonica toscana



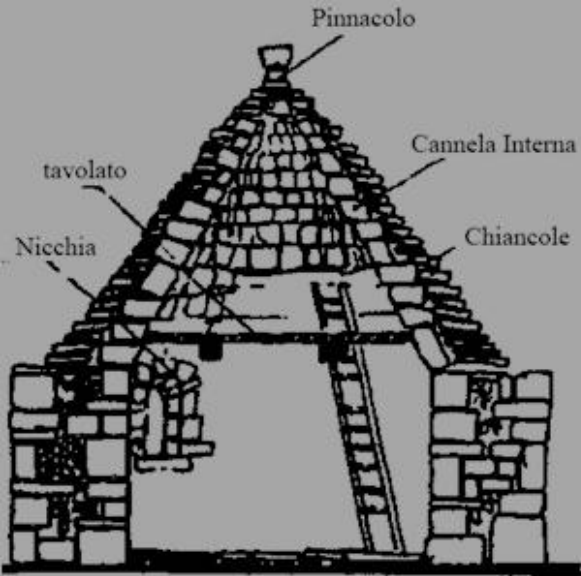


## Sassi di Matera dalla preistoria alla modernità





## Trullo pugliese risalente al 2000 a.C. circa

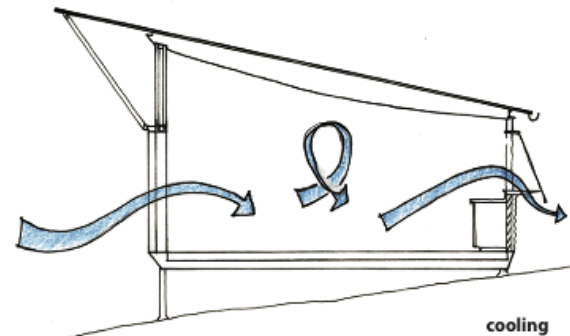
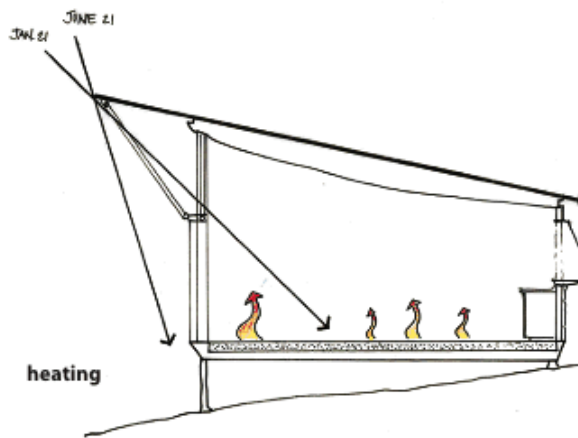


# Ricerca e sperimentazione contemporanea

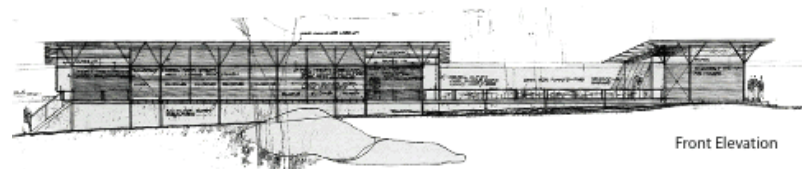
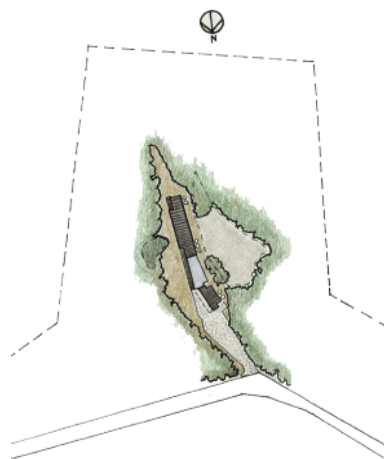
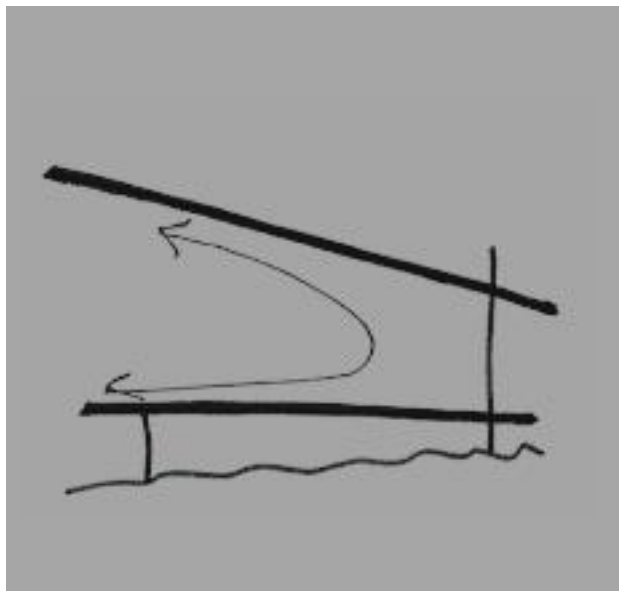


- Dalla tradizione alla Modernità
- IperTecnologia
- Architettura come essere vivente





# Dalla Tradizione alla Modernità : Glenn Murcutt – Simpson Lee House



- Entry
- Living Space
- Transition
- Private Space
- Restrooms

# SIMPSON LEE HOUSE





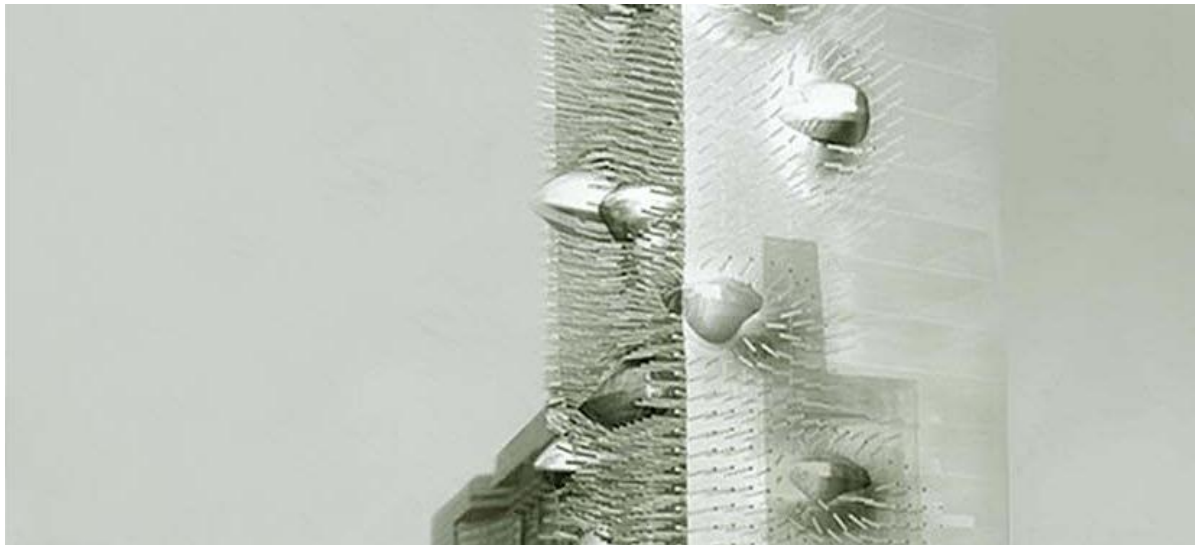


## Ipertecnologia : Herzog & de Meuron – Stadio Allianz Arena

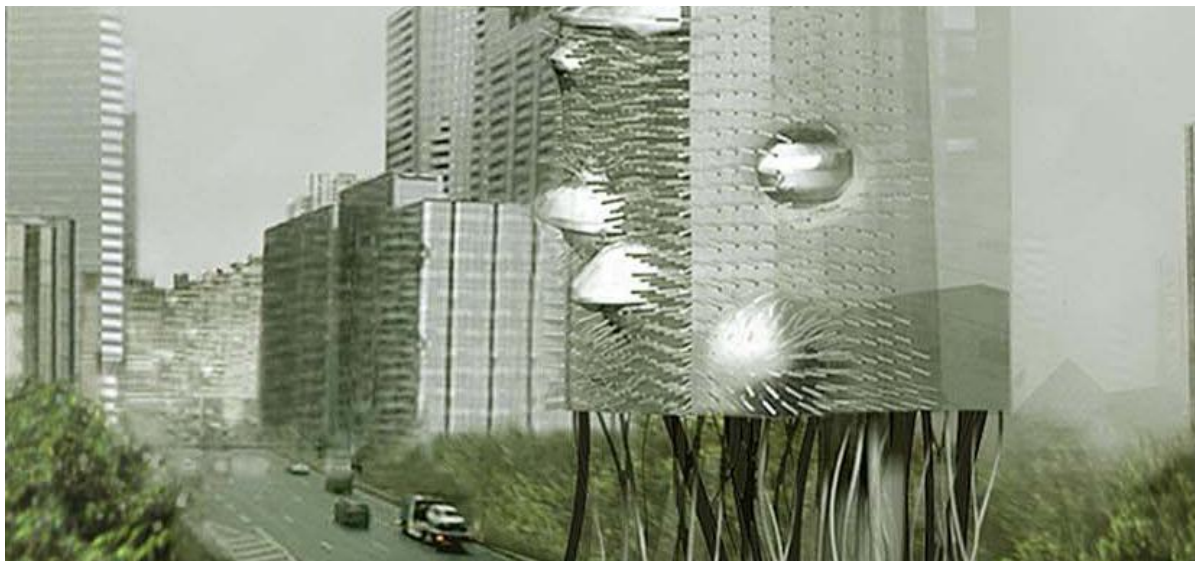


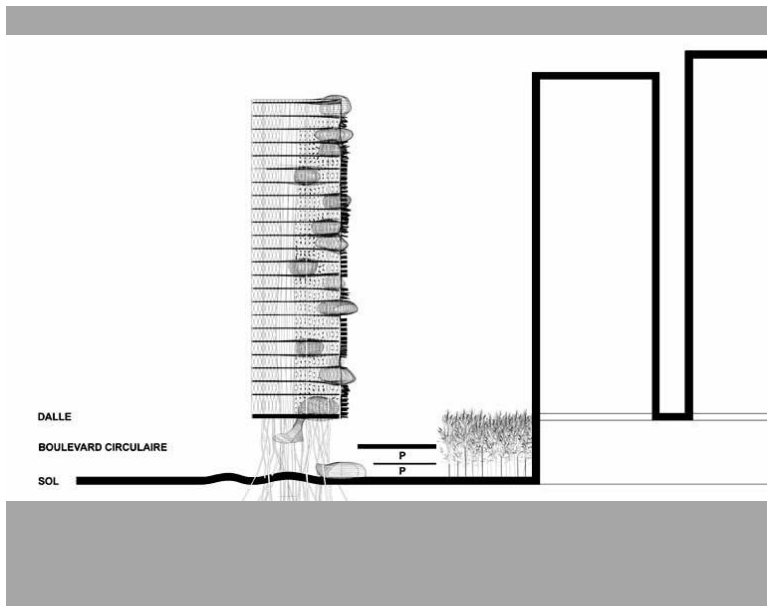
STADIO  
ALLIANZ  
ARENA





# Architettura come essere vivente: François Roche - Unplug





# UNPLUG

